

# COMMUNITY VISIONING WORKSHOP



Welcome to the

**NYC Health + Hospitals/Coler  
Coastal Resiliency Project**

**COMMUNITY VISIONING  
WORKSHOP**



# COMMUNITY VISIONING WORKSHOP

## Project Background

In the aftermath of Superstorm Sandy, Senator Chuck Schumer helped secure a large FEMA grant for NYC Health + Hospitals (H+H). The grant seeks to protect the City's most vulnerable public hospitals from coastal flooding and includes NYC H+H/Coler located on Roosevelt Island.

Currently, H+H is in the pre-design phase for a new perimeter hazard mitigation system at NYC H+H/Coler. This mitigation system will create a berm barrier, provide protection for up to a 500-year coastal flood event, and protect the long-term care facility from major storm events.

Below are renderings that depict what the landscape can look like after the completion of this project.

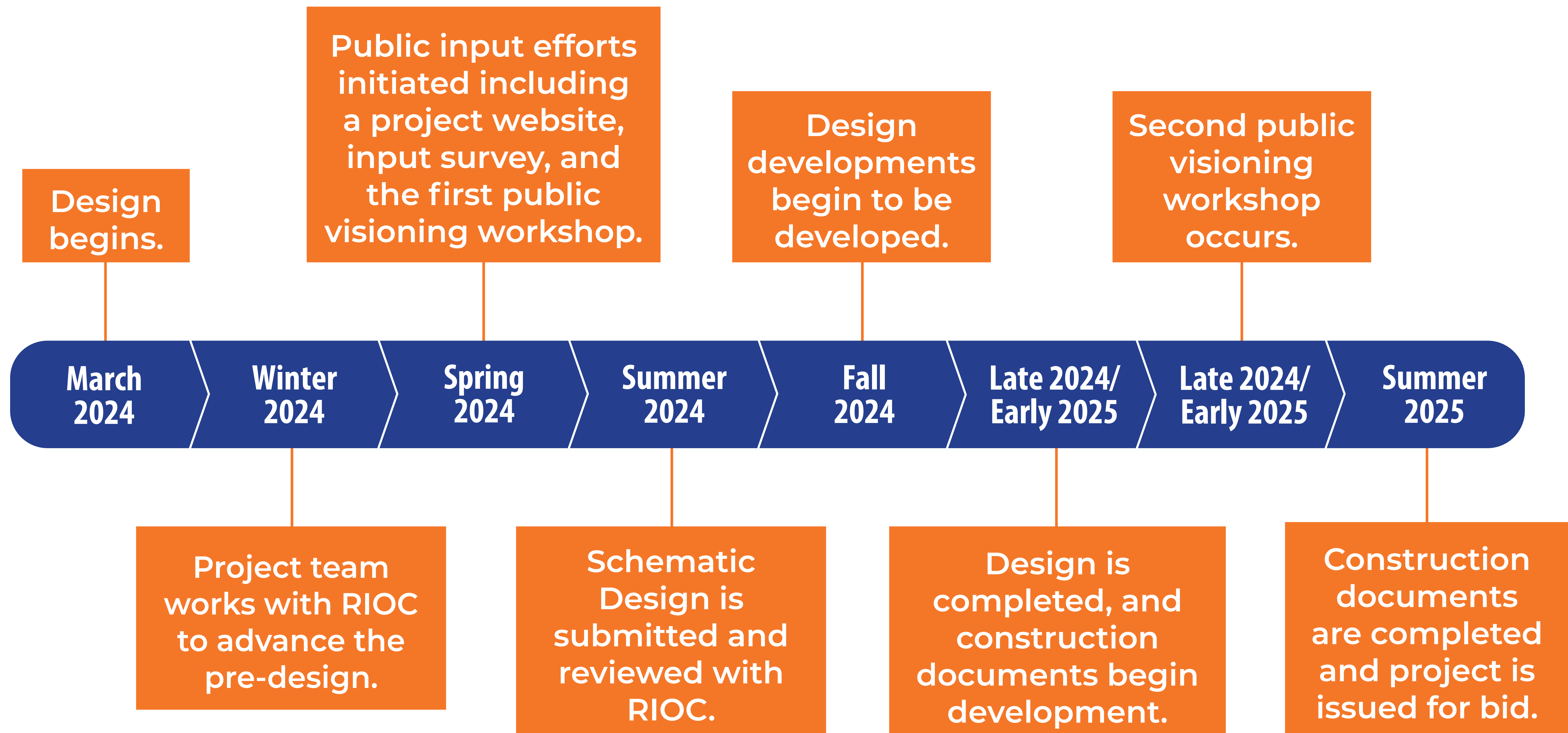




# COMMUNITY VISIONING WORKSHOP



## Project Timeline





# COMMUNITY VISIONING WORKSHOP



## How can you participate today?

Based on your vision and preferences for Roosevelt Island, what do you believe should be the top priorities for the project team to consider when designing the public spaces around NYC H+H/Coler? On the following boards use the provided stickers to mark the priorities you value most.

The project team is committed to incorporating your priorities into the final design plan for the public spaces around NYC H+H/Coler. Your input will help develop a vision that reflects the desires of the Roosevelt Island community.



*This project is funded through NYC H+H's obligated FEMA Hurricane Sandy grant assistance. In doing so, this funding allows for certain work to occur that is within the FEMA grant guidelines.*



# COMMUNITY VISIONING WORKSHOP



## Overview of the Public Space Options

Below is an overview of the options that could be incorporated into the public space around NYC H+H/Coler.

ADA accessibility  
features



Environmental additions,  
such as grass and plantings



Art installations



Open areas



Preserving existing trees



Protecting current property  
and the community



Parking



Restrooms



Seating areas



Viewpoint



Walking paths





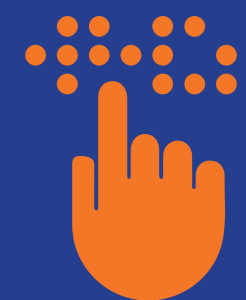
# COMMUNITY VISIONING WORKSHOP



## Public Space Options

Please place your stickers below the options that are the highest priority to you.

ADA accessibility features



Environmental additions,  
such as grass and plantings



Art installations

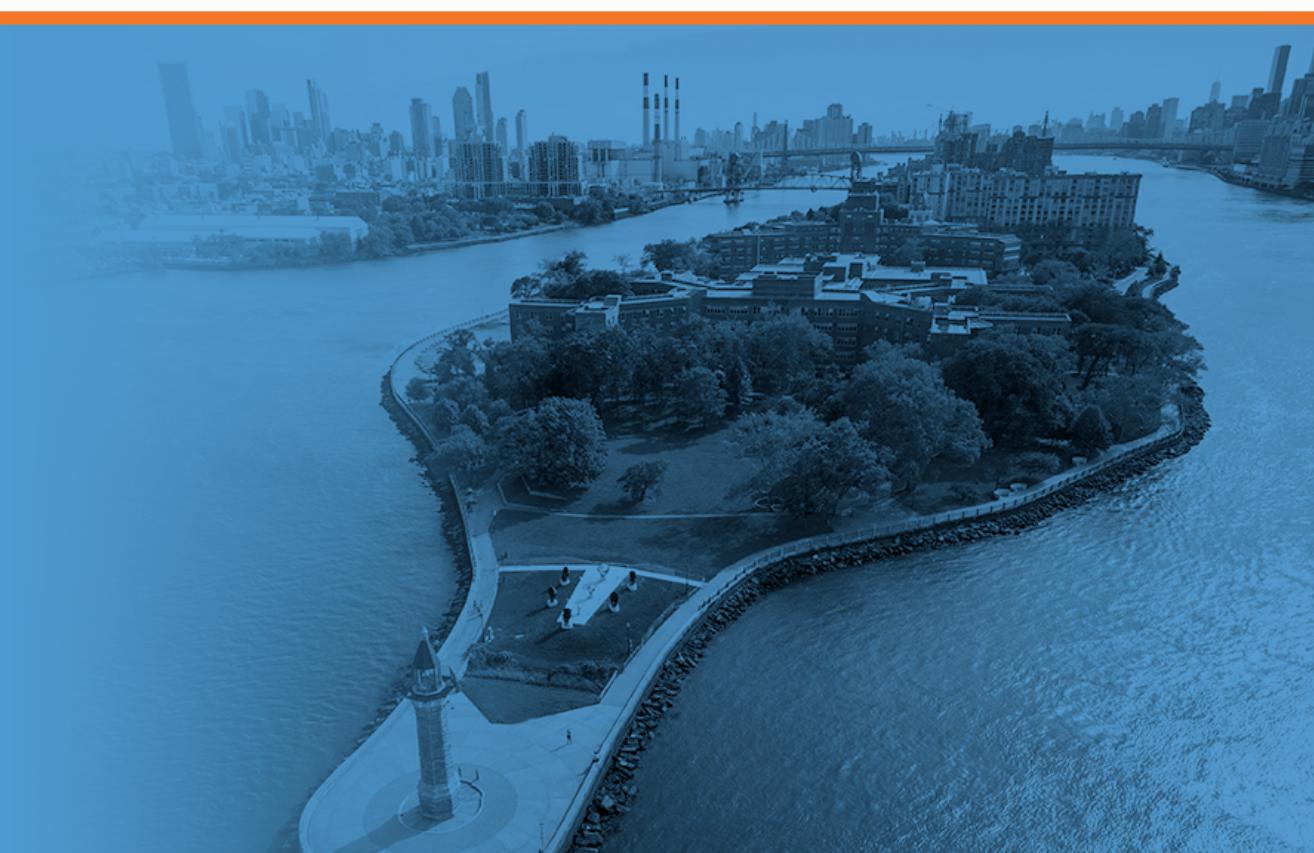


Open areas





# COMMUNITY VISIONING WORKSHOP



## Public Space Options

Please place your stickers below the options that are the highest priority to you.

Preserving existing trees



Protecting current property  
and the community



Parking



Restrooms



# COMMUNITY VISIONING WORKSHOP



## Public Space Options

Please place your stickers below the options that are the highest priority to you.

Seating areas



Viewpoint



Walking paths





# COMMUNITY VISIONING WORKSHOP



## Overview of Accessibility Options

Below are options for how the public spaces can be designed to ensure accessibility and inclusivity for all members of the Roosevelt Island community. Please review the accessibility options below.

**Add more ramp access**



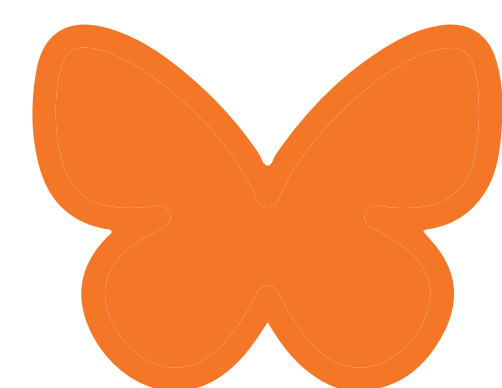
**Add language signage and navigation**



**Preserve the tree line north of Coler**



**Preserve access to the existing butterfly pollinator plantings**



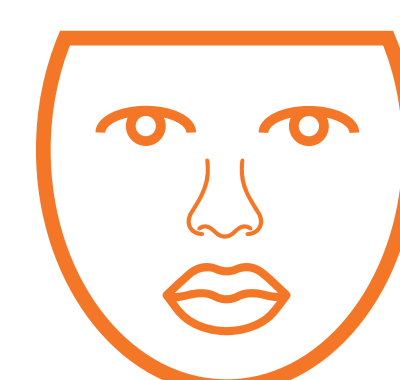
**Sustain the existing grassy open space north of Coler**



**Keep the picnic area north of Coler**



**Maintain access to the Girl Puzzle**





# COMMUNITY VISIONING WORKSHOP



## Accessibility Options

Please place your stickers below the options that are the highest priority to you.

Add more ramp access



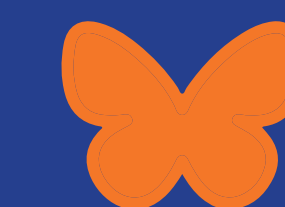
Add language signage and  
navigation



Preserve the tree line north  
of Coler



Preserve access to the  
existing butterfly pollinator  
plantings





# COMMUNITY VISIONING WORKSHOP



## Accessibility Options

Please place your stickers below the options that are the highest priority to you.

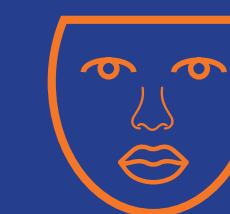
Sustain the existing grassy  
open space north of Coler



Keep the picnic area north  
of Coler



Maintain access to the  
Girl Puzzle





# COMMUNITY VISIONING WORKSHOP



## Is there anything else you would like the project team to consider?

Please use the provided post-it notes to share any other thoughts.

*While your idea may fall outside of the FEMA grant guidelines, we would still like to receive your input to note for potential future projects.*



# COMMUNITY VISIONING WORKSHOP



## Next Steps

- Concluding this workshop, the project team will collect and analyze all of the input from today's workshop. As we progress the design plan for the area around NYC H+H/Coler, we will incorporate your thoughts and insights every step of the way.
- Mark your calendars for the second visioning workshop, expected to take place in winter 2024.
- Stay engaged with the Coler Coastal Resiliency Project by visiting the project website, [www.colercoastalresiliency.com](http://www.colercoastalresiliency.com).

